

Apache

"wood-look" porcelain



GLACIER

COBSA-USA

NEW YORK | NEW JERSEY | MIAMI



DOMAPBA840





DOMAPFR840



WOOD-LOOK PORCELAIN

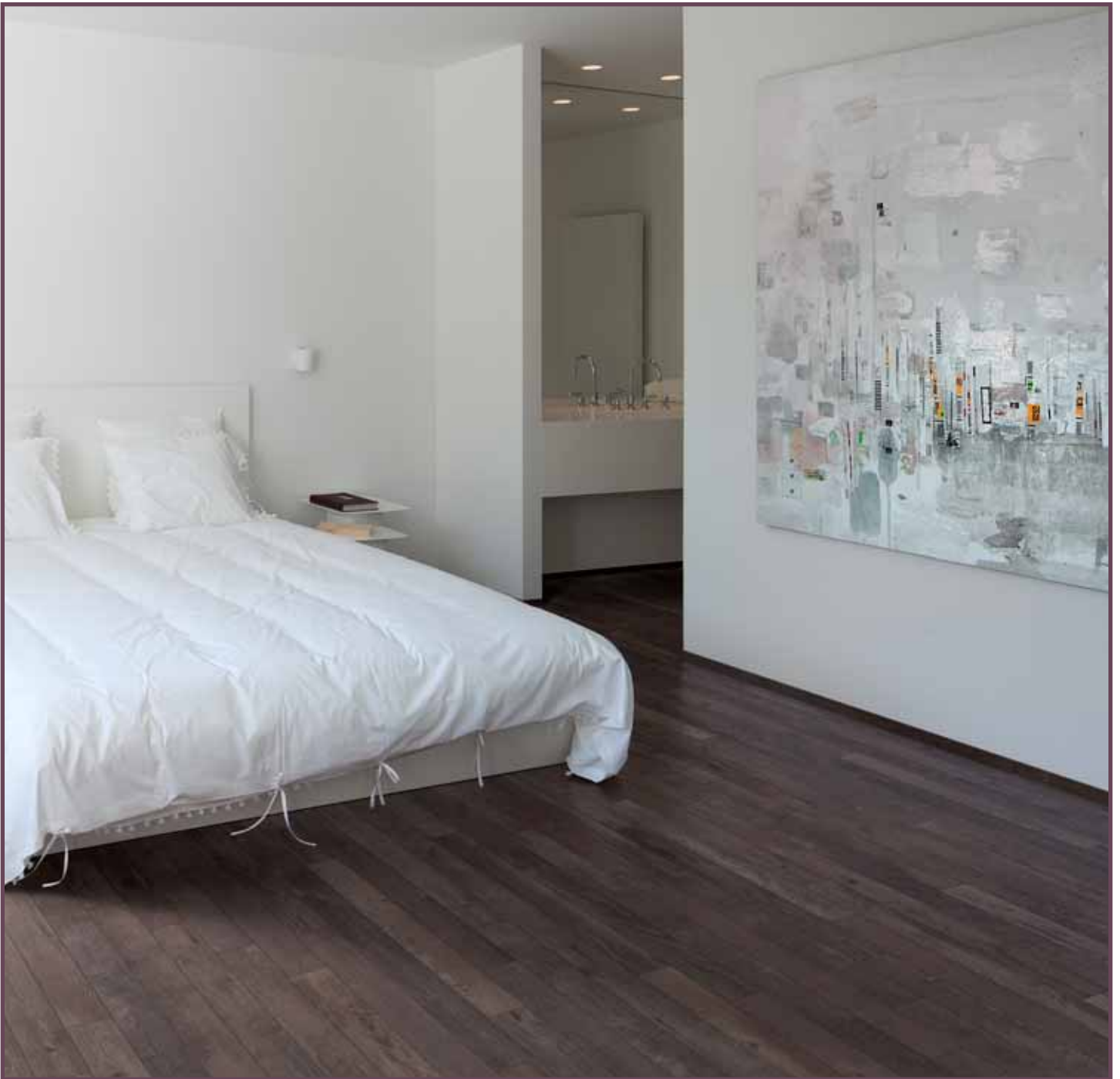
Glacier



DOMAPGL840



| 8 x 40 |



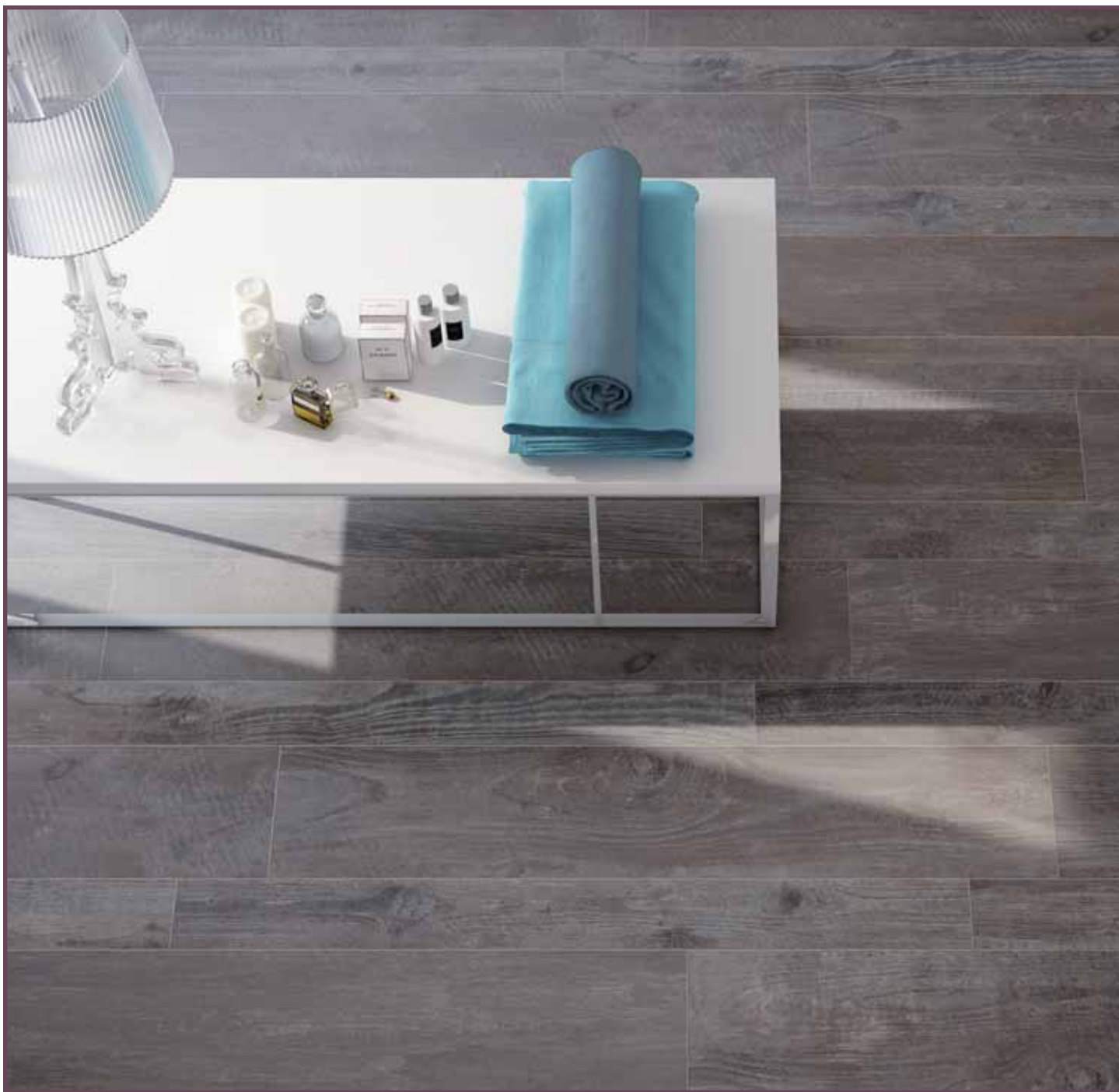
DOMAPLO840



| 8 x 40 |

WOOD-LOOK PORCELAIN

Summit



DOMAPSU840



| 8 x 40 |



DOMAPTR840



The marketing name for this product is property of CobsA-USA. This same product may be marketed under different names.

Suggested Applications

floor

wall

residential

light commercial

heavy commercial

exterior

pools

Installation Suggestions

joint size
 modular setting
 plank installation

edge: straight
 rustic
 rectified

finish: matte
 polished
 structured
 honed
 semi-polished
 other

Porcelain Type

 through-body color-bodied glazed unglazed double-loaded other

Shade Variation

V1 Uniform Appearance
 V2 Slight Variation
 V3 Moderate Variation
 V4 Substantial Variation

thickness: 10 mm
 inches

Slip Resistance

accessible routes	WET		DRY		DCOF
	standard*	result	standard*	result	
ramps	.6	0.65	.6	0.70	0.65

ASTM C-1028
DIN 51097/51130

Scratch Resistance

MOH'S SCALE

UNI EN ISO 10545.6 <175

Mineral	Mineral
1. Talc (Talc)	6. Microline (Glass, Glazed Tile)
2. Gypsum (Fingernail)	7. Quartz (Unglazed Porcelain)
3. Calcite (Penny)	8. Topaz (Granite)
4. Fluorite (Some Marbles)	9. Corundum (Ruby)
5. Apatite (Knife Blade)	10. Diamond (Diamond)

Industry standard ≤175mm²

Wear Resistance

PEI RATING UNI EN ISO 10545.7

Class 1: Walls only
 Class 2: Resid. floors w/minimal abrasive traffic.
 Class 3: Resid. interiors normal use and foot traffic.
 Class 4: Light-medium commercial applications.
 Class 5: Commercial applications.

1

Stain Resistance

ASTM C1378-04
UNI EN ISO 10545.14

5

- 5: Removed after 5 minutes (hot water running)
- 4: Removed by manual cleaning (weak detergent)
- 3: Removed by mechanical cleaning (strong detergent)
- 2: Removed by immersion (24 hrs in suitable solvent)
- 1: Stain not removed

Water Absorption

ASTM C-373
UNI EN ISO 10545.3

≤0.5

	Absorbs 0-5%	Absorbs .5-3%	Absorbs 3-7%	Absorbs 7% +
Impervious	<input checked="" type="checkbox"/>	<input type="checkbox"/>	<input type="checkbox"/>	<input type="checkbox"/>
Vitreous	<input type="checkbox"/>	<input type="checkbox"/>	<input type="checkbox"/>	<input type="checkbox"/>
Semi-Vitreous	<input type="checkbox"/>	<input type="checkbox"/>	<input type="checkbox"/>	<input type="checkbox"/>
Non-Vitreous	<input type="checkbox"/>	<input type="checkbox"/>	<input type="checkbox"/>	<input type="checkbox"/>

Breaking Strength

ASTM C648
UNI EN ISO 10545.4

>35

Industry standard should be greater than 250 lbs or 50 N/MM2

Facial Dimension

ASTM c499-09
UNI EN ISO 10545.02

	Standard	Tolerance	Result
flatness	± 5mm	± .5%	COMPLIES
thickness	± 6mm	± .5%	COMPLIES
straightness	± 4.5mm	± .5%	COMPLIES
squareness	± 5.4mm	± .6%	COMPLIES
sides L/W	± 1.1mm / ± 4.5mm	± .5%	COMPLIES

Chemical Resistance

ASTM C650
UNI EN ISO 10545.13

Allowsances for:

	result
acid	<input type="checkbox"/>
bases	<input type="checkbox"/>
chemicals	<input checked="" type="checkbox"/>

Leed Information

REQUIREMENTS FOR COMMERCIAL INTERIORS/NEW CONSTRUCTION

Sustainable Sites	Allowances for:	
	1 Point	2 Points
SS CREDIT 1 Heat Island Effect-non roof Material with a solar reflectant index of at least 29.	<input type="checkbox"/>	<input type="checkbox"/>
Energy & Atmosphere	1 Point	
EA CREDIT 4 Green Power: Products that optimize energy performance for floors and walls using thermal conductivity. BTU-FT	<input type="checkbox"/>	
Indoor Environmental Quality Low-Emitting Materials-Flooring Systems	1 Point	
IEQ CREDIT 3.1-7 Green Cleaning: Reducing occupants exposure to hazardous cleaning chemicals.	<input type="checkbox"/>	
IEQ CREDIT 4.1 Low Emitting Adhesives: Products less than 65 G/L VOC	<input type="checkbox"/>	
IEQ CREDIT 4.3 Low Emitting Materials: Flooring systems.	<input type="checkbox"/>	

Materials & Resources	Allowances for:	
	1 Point	2 Points
M&R CREDIT 2 Construction Waste Management: Recycling salvaged construction waste in to new reusable materials.	50% <input type="checkbox"/>	70% <input type="checkbox"/>
M&R CREDIT 4.1-4.2 Recycled Content: The sum of post consumer plus 1/2 of the pre consumer reps at least 10-20% of total value of materials.	10% <input type="checkbox"/>	20% <input type="checkbox"/>
M&R CREDIT 5 Regional Materials: Materials manufactured within 500 miles of the project site.	10% <input type="checkbox"/>	20% <input type="checkbox"/>
Innovation in Design	1-5 Points	
ID CREDIT 1 Innovation in Design Measurable exemplary environmental performance.	<input type="checkbox"/>	

Type: Porcelain Stoneware

Product Line: Apache

1: WEAR RESISTANCE

Differs according to color surface. Class 2: Barrel, Lodge, Summit | Class 4: Glacier, Trail | Class 5: Frost

2: LEED INFORMATION

All Cerindustries products comply with many of LEED's requirements and porcelain stoneware are made up of a percentage of recycled and recovered material (pre-consumer), that does exceed 40% of the total quantity of clays employed. Cerindustries products do not release VOC and are manufactured in production facilities environmental friendly certified.