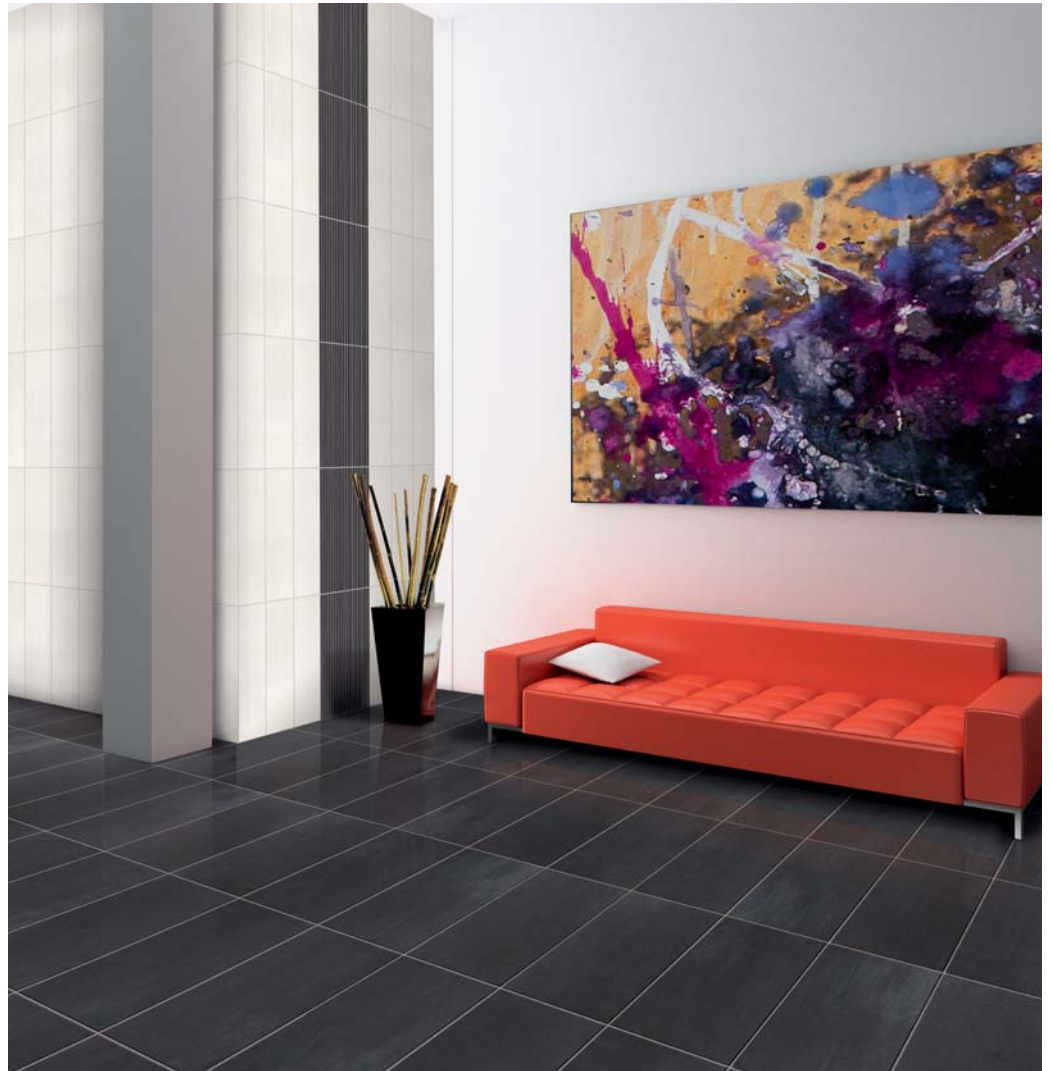
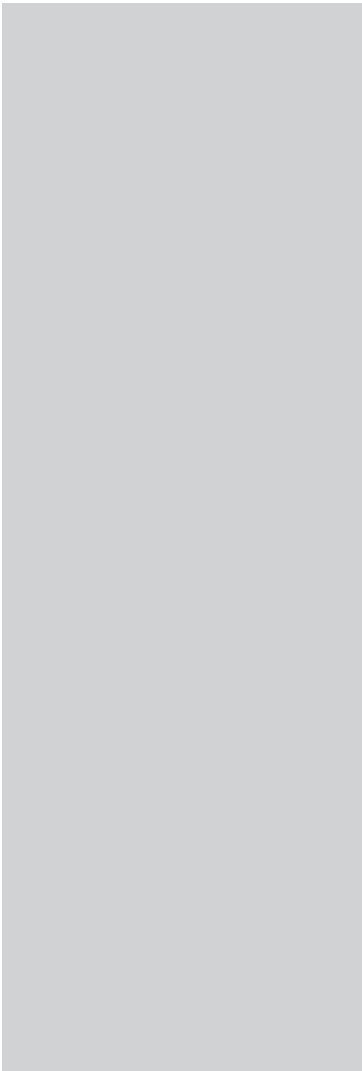
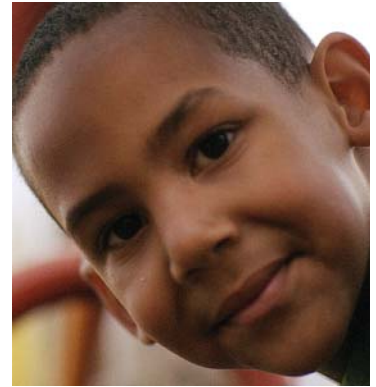




brushstroke

glazed porcelain



COBSA-USA

NEW YORK | NEW JERSEY | MIAMI

Beige



| 12X24 |

USABRBE1224



| 6X24 |

USABRBE624



| 6X24 | *bullnose*

USABRBE624BN

Ebony



| 12X24 |

USABREB1224



| 6X24 |

USABREB624



| 6X24 | *bullnose*

USABREB624BN

Nickel



| 12X24 |

USABRNI1224



| 6X24 |

USABRNI624



| 6X24 | *bullnose*

USABRNI624BN

Oyster



| 12X24 |

USABROY1224



| 6X24 |

USABROY624



| 6X24 | *bullnose*

USABROY624BN

Walnut



| 12X24 |

USABRWA1224



| 6X24 |

USABRWA624



| 6X24 | *bullnose*

USABRWA624BN



Suggested Applications

floor wall residential light commercial heavy commercial exterior pools

Installation Suggestions

joint size modular setting plank installation edge straight rustic rectified

matte polished structured honed semi-polished other

Shade Variation

V1 Uniform Appearance V2 Slight Variation V3 Moderate Variation V4 Substantial Variation

thickness: 9mm inches

Slip Resistance

ASTM C-1028
DIN 51097/51130

	Coefficient of Friction WET		Coefficient of Friction DRY	
	standard*	result	standard*	result
accessible routes	.6	.65	.6	.7
ramps	.8		.8	

Values: 0-0.50 Questionable, 0.50-0.60 Conditionally Slip Resistant, >0.60 Slip Resistant

*Industry Standard/ADA Requirements

DIN 51130		DIN 51097	
Class	Typical applications	Class	Critical angle
<input type="checkbox"/> R9*	3-10°	<input type="checkbox"/> A	Barefoot, but mainly dry aisles and walkways, dry changing areas ≥12°
<input type="checkbox"/> R10	10-19°		Shower rooms, pool surrounds, wet changing areas, disinfectant spray areas (plus all Class A areas) ≥18°
<input type="checkbox"/> R11	19-27°	<input type="checkbox"/> C	Areas constantly under water, e.g. steps into pools, foot baths, inclined pool surrounds, jacuzzis (plus all Class A&B areas) ≥24°
<input type="checkbox"/> R13	>35°		

Scratch Resistance

MOH'S SCALE 8

UNI EN ISO 10545.6

Mineral	Mineral
1. Talc (Talc)	6. Microline (Glass, Glazed Tile)
2. Gypsum (Fingernail)	7. Quartz (Unglazed Porcelain)
3. Calcite (Penny)	8. Topaz (Granite)
4. Fluorite (Some Marbles)	9. Corundum (Ruby)
5. Apatite (Knife Blade)	10. Diamond (Diamond)

Industry standard ≤175mm²

Wear Resistance

PEI RATING UNI EN ISO 10545.7

Class 1: Walls only
 Class 2: Resid. floors w/minimal abrasive traffic.
 Class 3: Resid. interiors normal use and foot traffic.
 Class 4: Light-medium commercial applications.
 Class 5: Commercial applications.

Stain Resistance

ASTM C1378-04
UNI EN ISO 10545.14

5: Removed after 5 minutes (hot water running)
4: Removed by manual cleaning (weak detergent)
3: Removed by mechanical cleaning (strong detergent)
2: Removed by immersion (24 hrs in suitable solvent)
1: Stain not removed

Water Absorption

ASTM C-373
UNI EN ISO 10545.3

Absorbs 0-.5% **Impervious** Interior/exterior Frost Resistant
 Absorbs .5-3% **Vitreous** Interior/exterior Frost Resistant
 Absorbs 3-7% **Semi-Vitreous** Indoor use only
 Absorbs 7%+ **Non-Vitreous** Indoor use only

Breaking Strength

ASTM C648
UNI EN ISO 10545.4

Industry standard should be greater than 250 lbs or 50 N/MM²

Facial Dimension

ASTM c499-09
UNI EN ISO 10545.02

	Standard	Tolerance	Result
flatness	± 5mm	± .5%	
thickness	± .04"	± .5%	<.018"
straightness	± 4.5mm	± .5%	
squareness	± 5.4mm	± .6%	
sides L/W	± 1.1mm ± 4.5mm	± .5%	

Chemical Resistance

ASTM C650
UNI EN ISO 10545.13

Allowances for:

	result
acid	NO EFFECT
bases	NO EFFECT
chemicals	

Leed Information

REQUIREMENTS FOR COMMERCIAL INTERIORS/NEW CONSTRUCTION

Sustainable Sites	1 Point	Materials & Resources	1 Point	2 Points
Site selection SS CREDIT 1 Heat Island Effect-non roof Material with a solar reflectant index of at least 29.	<input checked="" type="checkbox"/>	M&R CREDIT 2 Construction Waste Management: Recycling salvaged construction waste in to new reusable materials.	50% <input type="checkbox"/>	70% <input type="checkbox"/>
Energy & Atmosphere EA CREDIT 4 Green Power: Products that optimize energy performance for floors and walls using thermal conductivity. BTU-FT	<input checked="" type="checkbox"/>	M&R CREDIT 4.1-4.2 Recycled Content: The sum of post consumer plus 1/2 of the pre consumer reps at least 10-20% of total value of materials.	10% <input type="checkbox"/>	20% <input checked="" type="checkbox"/>
Indoor Environmental Quality Low-Emitting Materials-Flooring Systems	1 Point	M&R CREDIT 5 Regional Materials: Materials manufactured within 500 miles of the project site.	10% <input type="checkbox"/>	20% <input type="checkbox"/>
IEQ CREDIT 3.1-7 Green Cleaning: Reducing occupants exposure to hazardous cleaning chemicals.	<input checked="" type="checkbox"/>	Innovation in Design ID CREDIT 1 Innovation in Design Measurable exemplary environmental performance.		1-5 Points
IEQ CREDIT 4.1 Low Emitting Adhesives: Products less than 65 G/L VOC	<input checked="" type="checkbox"/>			<input type="checkbox"/>
IEQ CREDIT 4.3 Low Emitting Materials: Flooring systems.	<input checked="" type="checkbox"/>			

Product Line: **Brushstroke**

Type: **Color body porcelain**



NEW YORK | NEW JERSEY | MIAMI

FOR INFORMATION AND SAMPLES
T | 1-877-TO-COBSA W | WWW.COBSAUSA.COM

Due to printing and variations, colors shown could vary from actual sample.