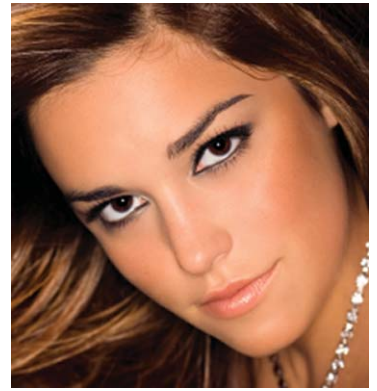


lifestone

porcelain stonewear



COBSA-USA

NEW YORK | NEW JERSEY | MIAMI

crema



USA LICR 1224

| 12 x 24 |



USA LICR 18

| 18 x 18 |



USA LICR 12

| 12 x 12 |



USA LICR MOS22

| 2 x 2 |
mosaic



USA LICR BN32

| 3 x 12 |
bullnose

crosscut



USA LICR 1224

| 12 x 24 |



USA LICR 18

| 18 x 18 |



USA LICR 12

| 12 x 12 |



USA LICR MOS22

| 2 x 2 |
mosaic



USA LICR BN32

| 3 x 12 |
bullnose

daino royal



USA LIDR 1224

| 12 x 24 |



USA LIDR 18

| 18 x 18 |



USA LIDR 12

| 12 x 12 |



USA LIDR MOS22

| 2 x 2 |
mosaic



USA LIDR BN32

| 3 x 12 |
bullnose

jura beige



USA LIJB 1224

| 12 x 24 |



USA LIJB 18

| 18 x 18 |



USA LIJB 12

| 12 x 12 |



USA LIJB MOS22

| 2 x 2 |
mosaic



USA LIJB BN32

| 3 x 12 |
bullnose

statuario



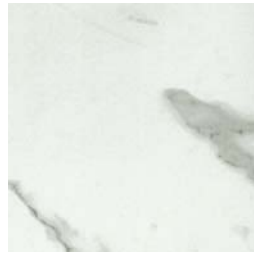
USA LIST 1224

| 12 x 24 |



USA LIST 18

| 18 x 18 |



USA LIST 12

| 12 x 12 |



USA LIST MOS22

| 1 x 1 |
mosaic



USA LIST BN32

| 3 x 12 |
bullnose



AMERICAN STANDARDS ▶

PHYSICAL PROPERTIES	TEST	INDUSTRY STANDARDS	iris MARMÍ (As Tested By TCNA)
WATER ABSORPTION	ASTM C-373	Tile Shall be Impervious (Less Than 0.5% for Porcelain Tile)	Less Than 0.05%
SIZE	ASTM C-499 ASTM C-485 ASTM C-502	Average Facial Dimension $\leq 1.5\%$ of largest value Average Major Thickness ≤ 0.04 In. Average Warpage 1% on any edge Average Warpage 0.75% on Diagonal Wedging 1%	0.45% 0.018 In. 0.01% 0.07% 0.01%
BOND STRENGTH	ASTM C-482	50 PSI or Greater	> 380 PSI
THERMAL SHOCK RESISTANCE	ASTM C-484-66	No Sample Must Show Visible Effects	Resistant
FROST RESISTANCE	ASTM C-1026	No Sample Must Show Alternation to Surface	Frost Proof *No Cracking or Spalling Occurred
CHEMICAL RESISTANCE	ASTM C-650	To 10% HCL Acid – No Sample Must Show Visible Signs of Chemical Attack – to 10% KOH Alkali	Unaffected
BREAKING STRENGTH	ASTM C-648	250 Lbs. or Greater	> 700 Lbs.
COLOR RESISTANCE TO LIGHT	DIN 51094	No Noticeable Color Change	No Change in Brightness or Color
LIGHT REFLECTANCE VALUE	ASTM C-609	N/A	Light Reflectance Value 59.22 Color Difference 2.07 Judds
IMPACT RESISTANCE	ASTM C-368	N/A	44.9 PSI Strength Factor
FLEXURAL RESISTANCE	ASTM C-674	N/A	9192.92 PSI (63.39 N/mm ²)
SKID RESISTANCE (Average Coefficient of Friction)	ASTM C-1028	Department of Justice ADA Title III Regulations 28 CFR Part 36, Section A4.5.1; Recommends minimum of 0.60 SCOF for horizontal surfaces	Dry Results Min. 0.70* Wet Results Min. 0.60*
HARDNESS (Moh's Scale)		No requirement	8
STAIN RESISTANCE	ASTM C-1378	Material exposed to test solutions for 24 hours at 74°F - contrasting grout - carbon lamp black - waterproof ink - washable ink - potassium permanganate solution 1% - methylene solution 1%	No staining
RESISTANCE TO WEAR	ASTM C-501	100	267.38
RESISTANCE TO ABRASION	ASTM C-1027	Class 5 - Tile resistant to stains and wear after 12,000 abrading revolutions Class 4 - Tile resistant to wear after 1,500 abrading revolutions Class 3 - Tile resistant to wear up to 1,500 abrading revolutions Class 2 - Tile resistant to wear up to 600 abrading revolutions Class 1 - Tile resistant to wear up to 150 abrading revolutions	Class 5 or 4, depending on color; results available upon request.

* These results are obtained from an average of overall sample data tested by Smith Emery Laboratories and TCNA. Coefficient of friction test results are available upon request.

COLOR/SHADE VARIATIONS ▶

As in nature, our products vary piece to piece. Please refer to graph for variations.



V 1

Difference among pieces from the same color are minimal



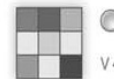
V 2

Shade variance within the same color



V 3

Significant shade variation within the same color



V 4

Extreme shade variation, piece to piece, within the same color

COBSA-USA

NEW YORK | NEW JERSEY | MIAMI

FOR INFORMATION AND SAMPLES
T | 1-877-TO-COBSA W | www.COBSAUSA.COM

Due to printing and variations, colors shown could vary from actual sample.